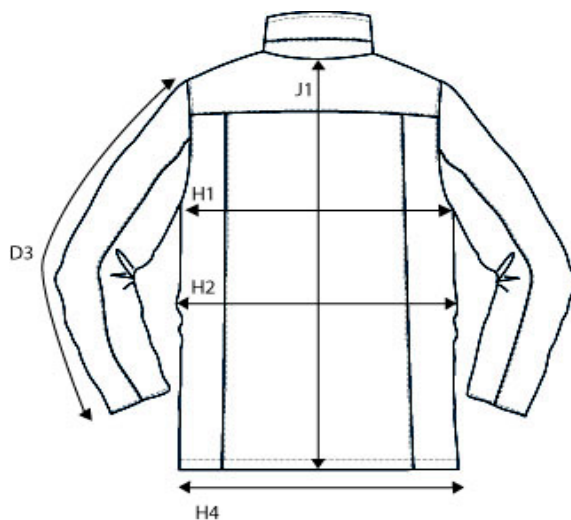
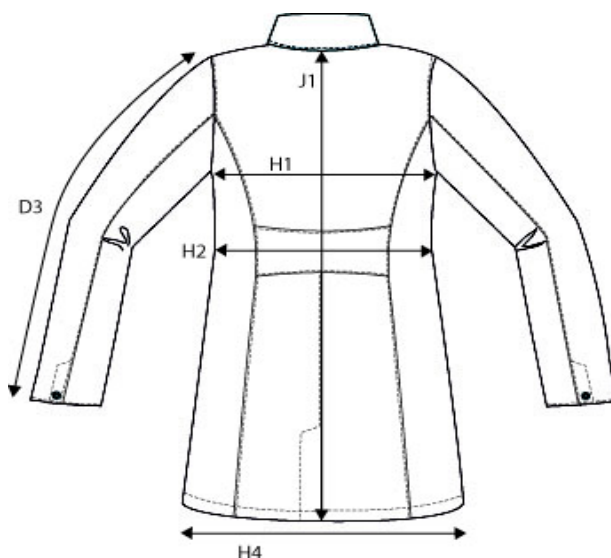


SIZE AND FIT: BELLINGTON



BELLINGTON Mens

Base size: M / Measurement (in cm)	Diagram	S	M	L	XL	XXL	3XL	4XL
SLEEVE LENGTH - from shoulderseam	D3	65,5	67,25	69	70,75	72,5	74,25	76
1/2 CHEST WIDTH at armhole	H1	55	58	61	64	67	70	73
1/2 WAIST	H2	55	58	61	64	67	70	73
1/2 BOTTOM WIDTH	H4	55	58	61	64	67	70	73
FULL LENGTH at centre back	J1	79	82	85	88	91	94	97



BELLINGTON Ladies

Base size: M / Measurement (in cm)	Diagram	XS	S	M	L	XL	XXL	3XL
SLEEVE LENGTH - from shoulderseam	D3	62	63	64	65	66	67	68
1/2 CHEST WIDTH at armhole	H1	50	53	56	59	62	65	69
1/2 WAIST	H2	46	49	52	55	58	62	66
1/2 BOTTOM WIDTH	H4	53	56	59	62	65	68	72
FULL LENGTH at centre back	J1	85	87	89	91	93	95	97